

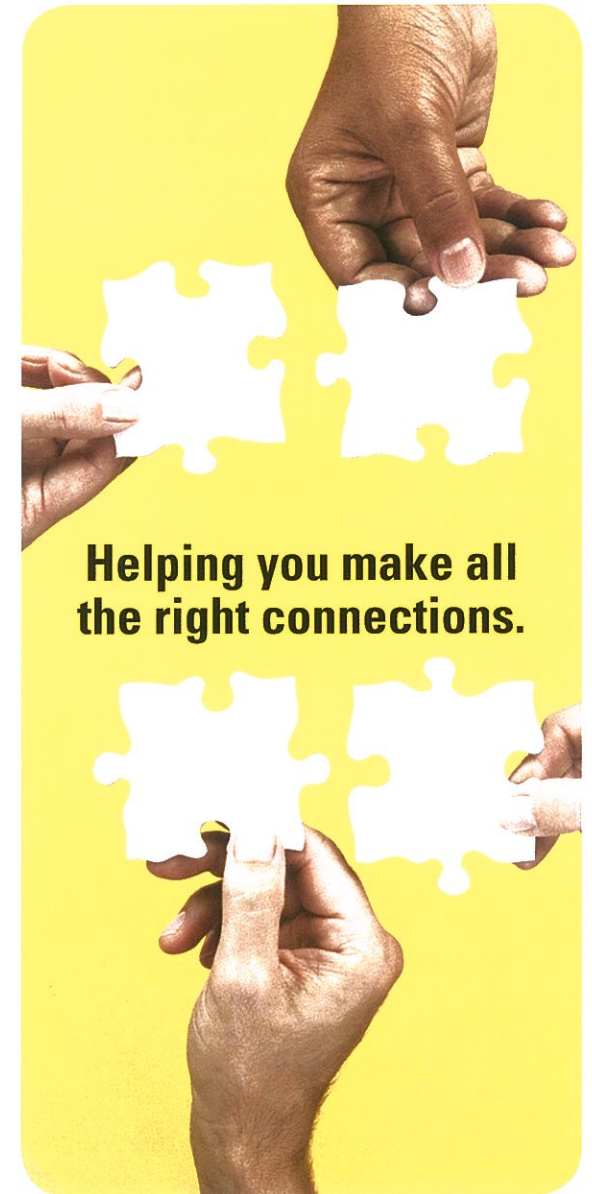
Connect with us

1-800-994-9422 or
www.ct.gov/communitychoices



Community Choices is managed by the Connecticut Department of Social Services and funded by grants from the Administration on Aging and the Centers for Medicare & Medicaid Services in partnership with Connect-Ability.

DSS Pub. #12-1



Community Choices strives to support you or your loved one through a coordinated system of information and access. Using our extensive knowledge and resources, we work to connect you to the services and support you deserve, from benefits screening, information and assistance to decision support and follow-up. It's all in an effort to offer choices that connect you to a better way of life.

Who we are

We're Community Choices. A powerful information hub, linking older adults and those living with disabilities in Connecticut to the services and support they seek. Our dedicated staff can connect you to everything from a name and phone number to more detailed information regarding community services, long term care planning, Options Counseling and care transitions.

Who we can support

Community Choices is designed to work with older adults and those 18 and over living with disabilities and caregivers who:

- Are unsure of where to go for help
- Have been previously denied benefits or services
- Want help communicating their needs
- Are planning for future long term care needs
- Want help navigating a complex system of federal, state and local programs

How we can support

Our dedicated staff and information specialists have experience in a number of different areas. Community Choices offers the following services to you:

- Options Counseling
- Short term care management
- Care transitions
- Application assistance
- Decision support
- Follow-up
- Long term care planning
- Benefits screening
- Information and assistance



Here is a listing of the different types of services we can connect you with:

- Employment, financial, housing and equipment assistance
- In-home services
- Adult day care
- Legal services
- Mental health/substance abuse services
- Transportation
- Nutrition
- Elder abuse prevention

Ask us about these services to learn more.

Connect with us

At Community Choices, we're here for you. If you're an older adult or person living with a disability and don't know where to go for help, connect with us. Call 1-800-994-9422 or visit www.ct.gov/communitychoices.